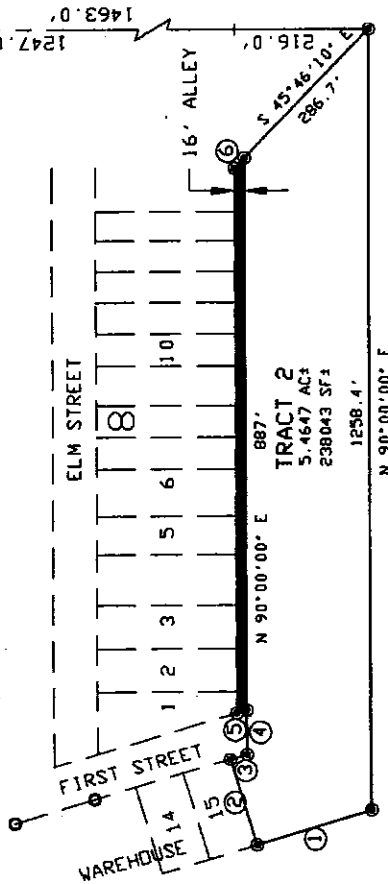
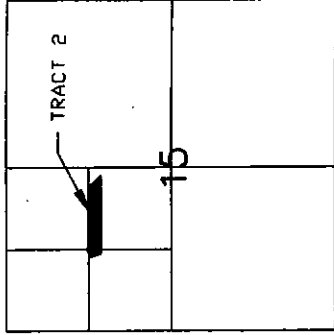
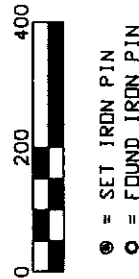


NW CORNER  
15-100-54  
TURNER COUNTY

SECTION LINE ASSUMED BEARING  
N 90°00'00" W



LINE	DIRECTION	DISTANCE
1	N 16°31'10" W	193.70'
2	N 73°28'50" E	146.00'
3	S 16°31'10" E	28.40'
4	N 90°00'00" E	73.00'
5	N 16°31'10" W	16.70'
6	N 45°46'10" W	22.95'



VICINITY MAP

# PLAT OF TRACT 2 LANGEROCK ADDITION TO THE TOWN OF MONROE, TURNER COUNTY, SOUTH DAKOTA

# COPY

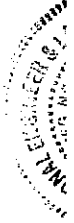
### SURVEYOR'S CERTIFICATE

I, ORLIN L. JIBBEN, OF JSA CONSULTING ENGINEERS/LAND SURVEYORS, INC., A REGISTERED LAND SURVEYOR IN THE STATE OF SOUTH DAKOTA, DO HEREBY CERTIFY THAT I HAVE, ON AND BEFORE DECEMBER 3, 1993, SURVEYED AND PLATTED A PORTION OF THE NW 1/4 OF SECTION 15, TOWNSHIP 100 NORTH, RANGE 54 WEST OF THE 5TH PRINCIPAL MERIDIAN, TURNER COUNTY, SOUTH DAKOTA AS SHOWN ON THE ABOVE PLAT.

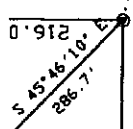
THE SAME SHALL HEREAFTER BE KNOWN AND DESCRIBED AS TRACT 2 OF LANGEROCK ADDITION TO THE TOWN OF MONROE, TURNER COUNTY, SOUTH DAKOTA.

I FURTHER CERTIFY THAT THE ABOVE PLAT CORRECTLY REPRESENTS THE SAME TO THE BEST OF MY KNOWLEDGE AND BELIEF AND THAT THIS SURVEY WAS PERFORMED UPON THE REQUEST AND UNDER THE DIRECTION OF THE OWNER FOR THE PURPOSE OF TRANSFER.

DATED THIS 10<sup>th</sup> DAY OF December, 1993.



TRACT 2  
5.4647 AC±  
238043 SF±



⊙ = SET IRON PIN  
○ = FOUND IRON PIN

1258.4'  
N 90° 00' 00" E

LINE	DIRECTION	DISTANCE
1	N 16° 31' 10" W	193.70'
2	N 73° 28' 50" E	146.00'
3	S 16° 31' 10" E	28.40'
4	N 90° 00' 00" E	73.00'
5	N 16° 31' 10" W	16.70'
6	N 45° 46' 10" W	22.95'

PLAT OF  
**TRACT 2 LANGEROCK ADDITION**  
TO THE TOWN OF MONROE,  
TURNER COUNTY, SOUTH DAKOTA

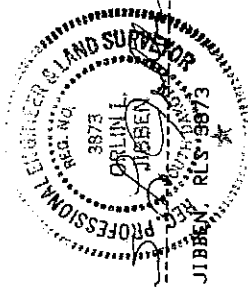
SURVEYOR'S CERTIFICATE

I, ORLIN L. JIBBEN, OF JSA CONSULTING ENGINEERS/LAND SURVEYORS, INC., A REGISTERED LAND SURVEYOR IN THE STATE OF SOUTH DAKOTA, DO HEREBY CERTIFY THAT I HAVE, ON AND BEFORE DECEMBER 3, 1993, SURVEYED AND PLATTED A PORTION OF THE NW 1/4 OF SECTION 15, TOWNSHIP 100 NORTH, RANGE 54 WEST OF THE 5TH PRINCIPAL MERIDIAN, TURNER COUNTY, SOUTH DAKOTA AS SHOWN ON THE ABOVE PLAT.

THE SAME SHALL HEREAFTER BE KNOWN AND DESCRIBED AS TRACT 2 OF LANGEROCK ADDITION TO THE TOWN OF MONROE, TURNER COUNTY, SOUTH DAKOTA.

I FURTHER CERTIFY THAT THE ABOVE PLAT CORRECTLY REPRESENTS THE SAME TO THE BEST OF MY KNOWLEDGE AND BELIEF AND THAT THIS SURVEY WAS PERFORMED UPON THE REQUEST AND UNDER THE DIRECTION OF THE OWNER FOR THE PURPOSE OF TRANSFER.

DATED THIS 10<sup>th</sup> DAY OF December, 1993.



*Orlin L. Jibben*  
ORLIN L. JIBBEN, REG.  
PROFESSIONAL ENGINEER  
3873  
SOUTH DAKOTA  
RELS-9873

OWNER'S CERTIFICATE

WE, BERDELL B. LANGEROCK AND ROWENA M. LANGEROCK, DO HEREBY CERTIFY THAT WE ARE THE OWNERS OF ALL PROPERTY INCLUDED IN THE FOREGOING PLAT AND THAT SAID PLAT HAS BEEN MADE AT OUR REQUEST AND IN ACCORDANCE WITH OUR INSTRUCTIONS FOR THE PURPOSE OF TRANSFER, AND THAT THE DEVELOPMENT OF THIS LAND SHALL CONFORM TO ALL EXISTING APPLICABLE ZONING, SUBDIVISION, AND EROSION AND SEDIMENT CONTROL REGULATIONS.

WE HEREBY DEDICATE TO THE PUBLIC FOR PUBLIC USE FOREVER, THE STREETS, ROADS AND ALLEYS, PARKS AND PUBLIC GROUNDS, IF ANY, AS SHOWN ON SAID PLAT, INCLUDING ALL SEWERS, CULVERTS, BRIDGES, WATER DISTRIBUTION LINES, SIDEWALKS AND OTHER IMPROVEMENTS ON OR UNDER THE STREETS, ALLEYS, PARKS AND PUBLIC GROUNDS WHETHER SUCH IMPROVEMENTS ARE SHOWN OR NOT. WE ALSO HEREBY GRANT EASEMENTS TO RUN WITH THE LAND FOR WATER, DRAINAGE, SEWER, GAS, ELECTRIC, TELEPHONE, OR OTHER PUBLIC UTILITY LINES OR SERVICES UNDER, ON OR OVER THOSE STRIPS OF LAND DESIGNATED HEREON AS EASEMENTS.

DATED THIS 12<sup>th</sup> DAY OF December, 1993.

*Berdell B. Langerock*

BERDELL B. LANGEROCK

*Rowena M. Langerock*

ROWENA M. LANGEROCK



*Orlin L. Jibben*  
ORLIN L. JIBBEN, RLS 9873

OWNER'S CERTIFICATE

WE, BERDELL B. LANGEROCK, AND ROMENA M. LANGEROCK, DO HEREBY CERTIFY THAT WE ARE THE OWNERS OF ALL PROPERTY INCLUDED IN THE FOREGOING PLAT AND THAT SAID PLAT HAS BEEN MADE AT OUR REQUEST AND IN ACCORDANCE WITH OUR INSTRUCTIONS FOR THE PURPOSE OF TRANSFER, AND THAT THE DEVELOPMENT OF THIS LAND SHALL CONFORM TO ALL EXISTING APPLICABLE ZONING, SUBDIVISION, AND EROSION AND SEDIMENT CONTROL REGULATIONS.

WE HEREBY DEDICATE TO THE PUBLIC FOR PUBLIC USE FOREVER, THE STREETS, ROADS AND ALLEYS, PARKS AND PUBLIC GROUNDS, IF ANY, AS SHOWN ON SAID PLAT, INCLUDING ALL SEWERS, CULVERTS, BRIDGES, WATER DISTRIBUTION LINES, SIDEWALKS AND OTHER IMPROVEMENTS ON OR UNDER THE STREETS, ALLEYS, PARKS AND PUBLIC GROUNDS WHETHER SUCH IMPROVEMENTS ARE SHOWN OR NOT. WE ALSO HEREBY GRANT EASEMENTS TO RUN WITH THE LAND FOR WATER, DRAINAGE, SEWER, GAS, ELECTRIC, TELEPHONE, OR OTHER PUBLIC UTILITY LINES OR SERVICES UNDER, ON OR OVER THOSE STRIPS OF LAND DESIGNATED HEREIN AS EASEMENTS.

DATED THIS 22nd DAY OF December, 1993.

COPY

*Berzell B. Langerock*  
BERDELL B. LANGEROCK  
*Romena M. Langerock*  
ROMENA M. LANGEROCK

STATE OF SOUTH DAKOTA > SS  
COUNTY OF TURNER >  
ON THIS 22nd DAY OF December, 1993, BEFORE ME,  
ROMENA M. LANGEROCK, WHO EXECUTED THE FOREGOING INSTRUMENT  
IN WITNESS WHEREOF, I HAVE HEREUNTO SET MY HAND AND OFFICIAL  
MY COMMISSION EXPIRES: 12-19-94



TOWN BOARD RESOLUTION

BE IT RESOLVED BY THE TOWN BOARD OF MONROE, SOUTH DAKOTA THAT THIS PLAT OF LANGEROCK ADDITION TO THE TOWN OF MONROE, SOUTH DAKOTA, PREPARED BY A LAND SURVEYOR DULY REGISTERED IN THE STATE OF SOUTH DAKOTA, IS APPROVED, AND THE TOWN CLERK IS HEREBY DIRECTED TO ENDORSE AND PLAT A COPY OF THIS RESOLUTION, AND CERTIFY THE SAME THEREON.

ADDED 22nd DAY OF December, 1993.

WITNESS:  
*W. Hayes F. Wines*  
TOWN CLERK

TOWN BOARD OF MONROE, SOUTH DAKOTA  
BY: *W. Hayes F. Wines*  
CHAIRMAN

STATE OF SOUTH DAKOTA > SS  
COUNTY OF TURNER >  
I, THE DULY APPOINTED, QUALIFIED AND ACTING TOWN CLERK OF THE TOWN OF MONROE, SOUTH DAKOTA, DO HEREBY CERTIFY THE ABOVE RESOLUTION IS TRUE AND CORRECT COPY OF THE RESOLUTION ADOPTED BY THE TOWN BOARD OF MONROE, SOUTH DAKOTA AT A MEETING HELD ON THE 22nd DAY OF December, 1993.

IN WITNESS WHEREOF I HEREUNTO SET MY HAND AND THE OFFICIAL SEAL OF THE TOWN OF MONROE, SOUTH DAKOTA.  
*W. Hayes F. Wines*  
TOWN CLERK

STATE OF SOUTH DAKOTA  
COUNTY OF TURNER  
ON THIS 22<sup>nd</sup> DAY OF December, 1993, BEFORE ME, the undersigned Notary Public, appeared Rowena M. Langerock, who executed the foregoing instrument and in witness whereof, I have hereunto set my hand and official seal at the place and date hereinafter mentioned.



MY COMMISSION EXPIRES: 12-19-94

NOTARY PUBLIC, STATE OF SOUTH DAKOTA

TOWN BOARD RESOLUTION

BE IT RESOLVED BY THE TOWN BOARD OF MONROE, SOUTH DAKOTA THAT THIS PLAT OF LANGEROCK ADDITION TO THE TOWN OF MONROE, SOUTH DAKOTA, PREPARED BY A LAND SURVEYOR DULY REGISTERED IN THE STATE OF SOUTH DAKOTA, IS APPROVED, AND THE TOWN CLERK IS HEREBY DIRECTED TO ENDEAVOR TO PLACE A COPY OF THIS RESOLUTION, AND CERTIFY THE SAME THEREON.

ADOPTED THIS 27<sup>th</sup> DAY OF December, 1993.

Town Clerk  
*[Signature]*

STATE OF SOUTH DAKOTA )  
COUNTY OF TURNER )

TOWN BOARD OF MONROE, SOUTH DAKOTA

BY: *[Signature]*  
CHAIRMAN

I, THE DULY APPOINTED, QUALIFIED AND ACTING TOWN CLERK OF THE TOWN OF MONROE, SOUTH DAKOTA, DO HEREBY CERTIFY THE ABOVE RESOLUTION IS TRUE AND CORRECT COPY OF THE RESOLUTION ADOPTED BY THE TOWN BOARD OF MONROE, SOUTH DAKOTA AT A MEETING HELD ON THE 27<sup>th</sup> DAY OF December, 1993.

Town Clerk  
*[Signature]*

IN WITNESS WHEREOF I HERETO SET MY HAND AND THE OFFICIAL SEAL OF THE TOWN OF MONROE, SOUTH DAKOTA.

COUNTY TREASURER'S CERTIFICATE

I, THE UNDERSIGNED COUNTY TREASURER FOR TURNER COUNTY, SOUTH DAKOTA, DO HEREBY CERTIFY THAT ALL TAXES WHICH ARE LIE UPON ANY LAND INCLUDED IN THE ABOVE AND FOREGOING PLAT AS SHOWN BY THE RECORDS OF MY OFFICE HAVE BEEN PAID IN FULL.

DATED THIS 27<sup>th</sup> DAY OF December, 1993

Turner County Treasurer  
*[Signature]*

DIRECTOR OF EQUALIZATION

I, THE UNDERSIGNED DIRECTOR OF EQUALIZATION FOR TURNER COUNTY, SOUTH DAKOTA, DO HEREBY CERTIFY THAT A COPY OF THE ABOVE PLAT HAS BEEN FILED AT MY OFFICE.

DATED THIS 27<sup>th</sup> DAY OF December, 1993

Turner County Director of Equalization  
*[Signature]*

REGISTER OF DEEDS

26789

FILED FOR RECORDS THIS 27<sup>th</sup> DAY OF December, 1993, AT 11:40 AM, AND RECORDED IN BOOK #7 OF PLATS ON PAGE 184.

10<sup>00</sup>  
*[Signature]*  
TURNER COUNTY REGISTER OF DEEDS

COPY